

# nutrisafe2<sup>®</sup>

## Ett enteralt säkerhetssystem

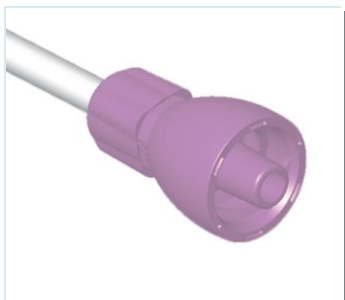
- ✓ Omöjliggör felkoppling med intravenösa infarter
- ✓ Komplet med sonder, sprutor och tillbehör
- ✓ Lila färg



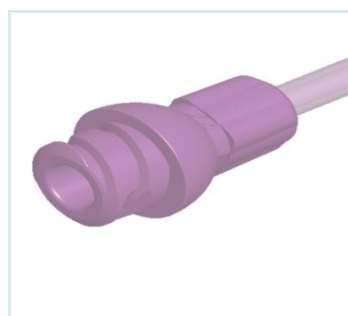
# nutrisafe2<sup>®</sup>



Hane

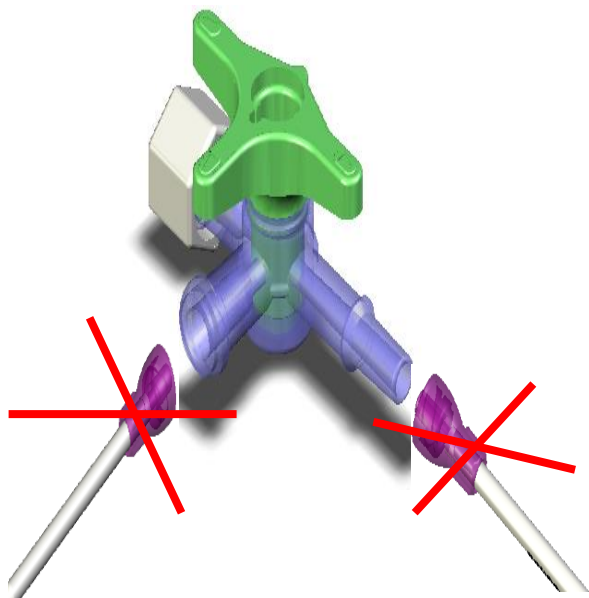


Hona

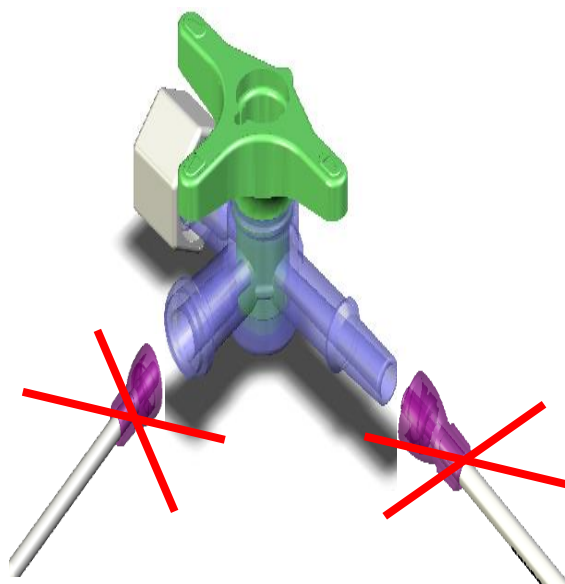


nutrisafe2<sup>®</sup> Hane och standard Luer Hona: **Inkompatibelt**

nutrisafe2<sup>®</sup> Hona och standard Luer Hane: **Inkompatibelt**



nutrisafe2<sup>®</sup> Hane och standard Luer Hane: **Inkompatibelt**

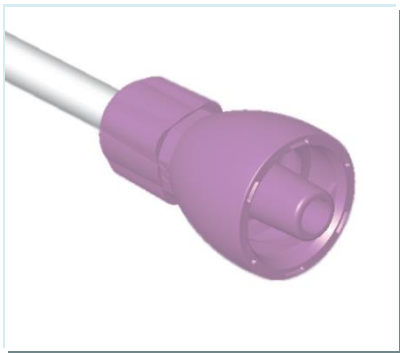


nutrisafe2<sup>®</sup> Hona och standard Luer Hona: **Inkompatibelt**

# nutrisafe2<sup>®</sup>

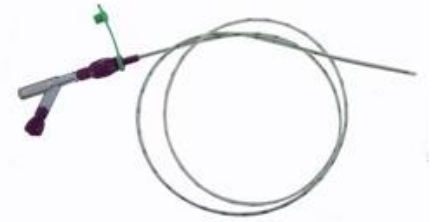


- ✓ Ser ut som en Luer MEN är inte en Luer
- ✓ nutrisafe2<sup>®</sup> är inkompatibel med ALLA produkter som har en standard Luer. Risken för felkopplingar minimeras.
- ✓ Äggformad design för att minimera hudirritation och underlätta handhavande





# Sonder



| Längd | Fp | Fr 04 | Fr 05 | Fr 06 | Fr 08 | Fr 10 | Fr 12 |
|-------|----|-------|-------|-------|-------|-------|-------|
|-------|----|-------|-------|-------|-------|-------|-------|

| PVC (röntgentråd) |    |         |         |         |         |         |         |
|-------------------|----|---------|---------|---------|---------|---------|---------|
| 40 cm             | 25 | 364.042 | 364.052 | 364.062 | 364.082 | -       | -       |
| 50 cm             | 50 | 361.042 | 361.052 | 361.062 | 361.082 | 361.102 | -       |
| 75 cm             | 25 | 363.042 | 363.052 | 363.062 | 363.082 | 363.102 | 363.122 |
| 125 cm            | 25 | 362.042 | 362.052 | 362.062 | 362.082 | 362.102 | 362.122 |

| PUR (röntgentråd) |    |          |          |          |          |          |          |
|-------------------|----|----------|----------|----------|----------|----------|----------|
| 40 cm             | 25 | 1364.042 | 1364.052 | 1364.062 | 1364.082 | -        | -        |
| 50 cm             | 50 | 1361.042 | 1361.052 | 1361.062 | 1361.082 | 1361.102 | -        |
| 75 cm             | 25 | 1363.042 | 1363.052 | 1363.062 | 1363.082 | 1363.102 | 1363.122 |
| 125 cm            | 25 | 1362.042 | 1362.052 | 1362.062 | 1362.082 | 1362.102 | 1362.122 |

| SILIKON (röntgätät) |    |          |          |          |          |          |   |
|---------------------|----|----------|----------|----------|----------|----------|---|
| 50 cm               | 10 | 2331.042 | 2331.052 | 2331.062 | 2331.082 | 2331.102 | - |
| 125 cm              | 10 | 2332.042 | -        | 2332.062 | 2332.082 | 2332.102 | - |
| 125 cm*             | 10 | -        | -        | 2395.062 | 2395.082 | -        | - |

| PUR - Ledare, sidohål, stängd tip (röntgentråd) |    |           |           |           |           |           |           |           |
|---|----|-----------|-----------|-----------|-----------|-----------|-----------|-----------|
| Längd   | Fp | Fr 06     | Fr 08     | Fr 10     | Fr 12     | Fr 14     | Fr 16     | Fr 18     |
| 75 cm   | 25 | 1363.0621 | 1363.0821 | 1363.1021 | 1363.1221 | 1363.1421 | 1363.1621 | 1363.1821 |
| 125 cm  | 25 | -         | 1362.0821 | 1362.1021 | 1362.1221 | 1362.1421 | 1362.1621 | 1362.1821 |

| PUR - Ledare, öppen tip (röntgentråd) |    |       |           |           |           |       |       |       |
|---------------------------------------|----|-------|-----------|-----------|-----------|-------|-------|-------|
| Längd                                 | Fp | Fr 06 | Fr 08     | Fr 10     | Fr 12     | Fr 14 | Fr 16 | Fr 18 |
| 75 cm                                 | 25 | -     | 1363.0822 | 1363.1022 | 1363.1222 | -     | -     | -     |
| 125 cm                                | 25 | -     | 1362.0822 | 1362.1022 | 1362.1222 | -     | -     | -     |

1. PVC – Maximal användningstid 5 dagar
  2. PUR – Maximal användningstid 29 dagar
  3. Silikon – Maximal användningstid 29 dagar
- \* Med vikt

## Enteralsprutor



|          |          |          |          |          |          |
|----------|----------|----------|----------|----------|----------|
| 1 ml     | 2,5 ml   | 5 ml     | 10 ml *  | 20 ml *  | 60 ml*   |
| 1015.013 | 1015.023 | 1015.053 | 1015.103 | 1015.213 | 1015.603 |
| Fp 160   | Fp 130   | Fp 100   | Fp 100   | Fp 100   | Fp 50    |

\* Sidokopplad



Value Life

# Tillbehör



Förlängningsslang aggregat till sond / knapp

339.0182

Fp 25

Adapter  
Nutrisafe 2 (hon-koppling)  
– ENFit (han-koppling)



Adapter Nutrisafe 2 – ENFit

368.72

Fp 100

Används mellan:  
Aggregat - sond  
Aggregat – knapp/PEG



Används mellan:  
sond - förlängningsslang  
sond - aggregatkoppling



3-vägskran

5802.01

Fp 50

Förlängningsslang

| Art.nr  | Längd  | Fp | Inner Ø |
|---------|--------|----|---------|
| 368.032 | 30 cm  | 50 | 1,5 mm  |
| 368.102 | 100 cm | 50 | 1,5 mm  |
| 368.152 | 150 cm | 50 | 1,5 mm  |
| 369.152 | 150 cm | 25 | 2,8 mm  |

För att förlänga sonden

Adapter  
ENFit (hon-koppling) –  
Nutrisafe 2 (han-koppling)



Adapter ENFit – Nutrisafe 2

0VEACC510

Fp 50



Adapter PEG/knapp

368.12

Fp 30

Används mellan:  
sond - förlängningsslang  
sond - aggregatkoppling

Koppling att använda mellan  
spruta och PEG/Knapp



Y-koppling

368.42

Fp 50



Sondfixering

Grip-Lok  
(sondfixering)

5804.11

Fp 50

Koppling att använda mellan  
sond och aggregat

Adapter aggregat

368.02

Fp 30



Value Life

# Tillbehör



För att dra upp läkemedel, vitaminer mm ur flaska med membran



För att dra upp läkemedel, vitaminer mm ur flaska utan membran

| Uppdragningslock med spike |       |    |
|----------------------------|-------|----|
| Art.nr                     | Mått  | Fp |
| 821.012                    | 14 mm | 50 |
| 821.022                    | 20 mm | 25 |



Spike

Art.nr

281.062

Fp 10

| Uppdragningsrör för läkemedel |       |     |
|-------------------------------|-------|-----|
| Art.nr                        | Längd | Fp  |
| 817.052                       | 5 cm  | 100 |
| 817.152                       | 15 cm | 50  |
| 817.202                       | 20 cm | 50  |
| 817.302                       | 30 cm | 50  |
| 817.502                       | 50 cm | 20  |



För att dra upp läkemedel, vitaminer mm ur flaska/påse med membran

För att dra upp läkemedel mm ur flaska med membran

| Uppdragningskanyl för läkemedel |       |
|---------------------------------|-------|
| 817.002                         | 50 mm |
| Fp 100                          |       |



Kork att sätta på flaska. Passar alla nutrisafe2® sprutor



| Korkar till         |                     |                        |
|---------------------|---------------------|------------------------|
| Spruta<br>1 st      | Spruta<br>8 st      | Sond/Tillbehör<br>1 st |
| 828.01 <sup>1</sup> | 828.08 <sup>2</sup> | 829.01                 |
| Fp 100              |                     |                        |

Kork/propp till enteralsprutor, sond och tillbehör

| Kork till flaska |       |
|------------------|-------|
| 820.18           | 18 mm |
| 820.20           | 20 mm |
| 820.22           | 22 mm |
| 820.28           | 28 mm |
| Fp 20            |       |

<sup>1</sup> 1 st i varje sterilförpackning

<sup>2</sup> 8 st i varje sterilförpackning



Value Life

# Tillbehör



Uppdragningsrör med filter (5 µm)

|         |
|---------|
| Art.nr  |
| 817.105 |
| Fp 50   |

För att dra upp läkemedel, vitaminer mm ur flaska utan membran. Längd 10cm



Adapter "Hane-Hane"

|        |
|--------|
| Art.nr |
| 368.22 |
| Fp 30  |

Används för att överföra vätska mellan två enteralsprutor



Förlängningsslang till Mic-key® knapp

| Art.nr    | Längd |
|-----------|-------|
| 5307.1103 | 30 cm |
| 5307.1106 | 60 cm |
| Fp 10     |       |

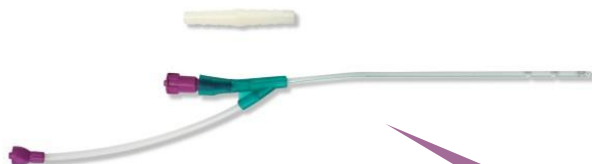
Koppling att använda till Mic-key®knapp. Rak koppling



Koppling att använda till Mic-key®knapp. 90° koppling

Förlängningsslang till Mic-key® knapp

| Art.nr    | Längd |
|-----------|-------|
| 5307.2103 | 30 cm |
| 5307.2106 | 60 cm |
| Fp 10     |       |



Salem sump sond 60 cm

| Art.nr  | Storlek |
|---------|---------|
| 340.062 | 6 Fr    |
| 340.082 | 8 Fr    |
| Fp 10   |         |

Används för att suga/aspirera i ventrikeln



Value Life

## **PUBLICATIONS**

1. J E Gray, D A Goldmann - Medication errors in the neonatal intensive care unit: special patients, unique issues - Arch Dis Child Fetal Neonatal Ed 004; 89:F472-F473.
2. Laura A. Stokowski, RN, MS - Safety in the NICU: Preventing Medical Errors NANN '06 Medscape Nurses, March 2007
3. Wrong-Route Errors - Safety first, Massachusetts Coalition for the prevention of healthcare errors - June 1999 <http://www.macoalition.org/documents>. SafetyFirst1.pdf, accessed 10 June 2006).
4. ISMP Medication safety Alert, April 4, 2003 - Enteral feeding given IV - <http://www.ismp.org/newsletters/acutecare/articles/A2Q03Action.asp>
5. National Patient Safety Agency, 28 March 2007 - Promoting safer measurement and administration of liquid medicines via oral and other enteral routes - [www.npsa.nhs.uk/health/display?contentId=5761](http://www.npsa.nhs.uk/health/display?contentId=5761)
6. Debora Simmons, MSN, RN, CCRN, CCNS - Safe system, Safe patients: Common connectors pose a threat to safe practice - Texas Board of nursing bulletin, Vol. 37, N° 2, (ou 37 (2)) 6-7, April 2006
7. Laura Stokowski, RN, MS, Column editor Sentinel Event Alert: Dangerous tubing misconnections - Advances in Neonatal Care, Vol. 6, N°5 (October), 2006: pp 225 – 227.
8. Avoiding catheter and tubing mis-connections - World Health Organization – Vol. 1, solution 7, May 2007
9. Lopez Garcia M.J., Sorribes Monrabal I., Fernandez-Delgado Cerda R. - Accidental intravenous administration of semi-elemental formula in infant (letter) – Clinics Pediatrics 1992, 31 (12), 757-758.
10. Beverly Galluresi, RN, MPH; Melissa Eakle, RN, MBA, Audrey Morrison, RN, BSN - Misconnections between medical devices with Luer connectors: under-recognized but potentially fatal events in clinical practice - Safe Practices in Patient Care – April 2007, Vol. 3, N° 2. - <http://www.safe-practices.org/SafePractice8.pdf>
11. Avoiding Catheter and Tubing Mis-Connections - Patient Safety Solution 7 - May 2007, Vol. 3, Issue 5
12. Cohen, Michael R. - Enteral fluid via I.V. pump - Nursing, Aug 2004
13. Vecchione A.- JCAHO warns of tubing errors - Health-System edition, 22 May 2006 (<http://mediwire.healingwell.com/main/Default.aspx?P=Content&ArticleID=326253>, accessed 10 June 2006)
14. Gautham S. - Voluntary anonymous reporting of medical errors for neonatal intensive care- Pediatrics 2004; 113; 16009-1618 - <http://pediatrics.org/cgi/content/full/113/6/1609>
15. Preventing wrong route errors with oral/enteral medications, feeds and flushes - National Patient safety Agency Patient Safety Alert, Draft responses to 1st consult, January-march 2006. <http://www.saferhealthcare.org.uk/NR/rdoyses/3F9F3FB2-89B6-4633-ACE9-A51EC2023EBC/0/NPSAdraftpatientsafetyalertonoralconnectorsforstakeholderconsultation.pdf>
16. Copeland D., Appel J.- Implementation of an enteral nutrition and medication administration system utilizing oral syringes in the NICU- Neonatal Network - Volume 25, N°1, 21-24, January/February 2006
17. Page L. - Diligence, technology prevent IV and feeding tube mix-ups: finding the wrong fit - Materials Management in Health Care - April 2006:24-28
18. Preventing misconnections of lines and cables - ECRI, Health devices - March 2006;35 (3):81-95
19. Cousins DH, Upton DR. - Medications errors: oral paracetamol liquid administered intravenously: time for hospitals to issue oral syringe in clinical areas? – Pharmacy in practices, 2001, 7 : 221
20. Building a safer NHS for patients: Improving medication safety (2004). Available at: [www.dh.gov.uk](http://www.dh.gov.uk). London, Department of Health, 2004 ([http://www.dh.gov.uk/en/Publicationsandstatistics/Publications/PublicationsPolicyAndGuidance/DH\\_4071443](http://www.dh.gov.uk/en/Publicationsandstatistics/Publications/PublicationsPolicyAndGuidance/DH_4071443) accessed 10 June 2006)
21. Stellato TA, Danziger LH, Nearman HS, Creger RJ. - Inadvertent intravenous administration of enteral diet - Journal of Parenteral and Enteral Nutrition 1984;4:453-455.
22. Solomon RB - Intravenous milk infusion - The Lancet - 1972;2:187.
23. Wallace JR, Payne RW, Mack AJ. - Inadvertent intravenous infusion of milk - Lancet. 1972;1:1264-1265
24. Ryan CA, et al. - Normal neurologic and developmental outcome after an accidental intravenous infusion of expressed breast milk in a neonate – Pediatrics - 117(1):236-238, January 2006
25. Tubing misconnections – a persistent and potentially deadly occurrence. Sentinel Event Alert. 2006 April 3; 36 Joint Commission. [http://www.jointcommission.org/SentinelEvents/SentinelEventAlert/sea\\_36.htm](http://www.jointcommission.org/SentinelEvents/SentinelEventAlert/sea_36.htm)